



Ocean

# Ocean

www.sparcraft.com

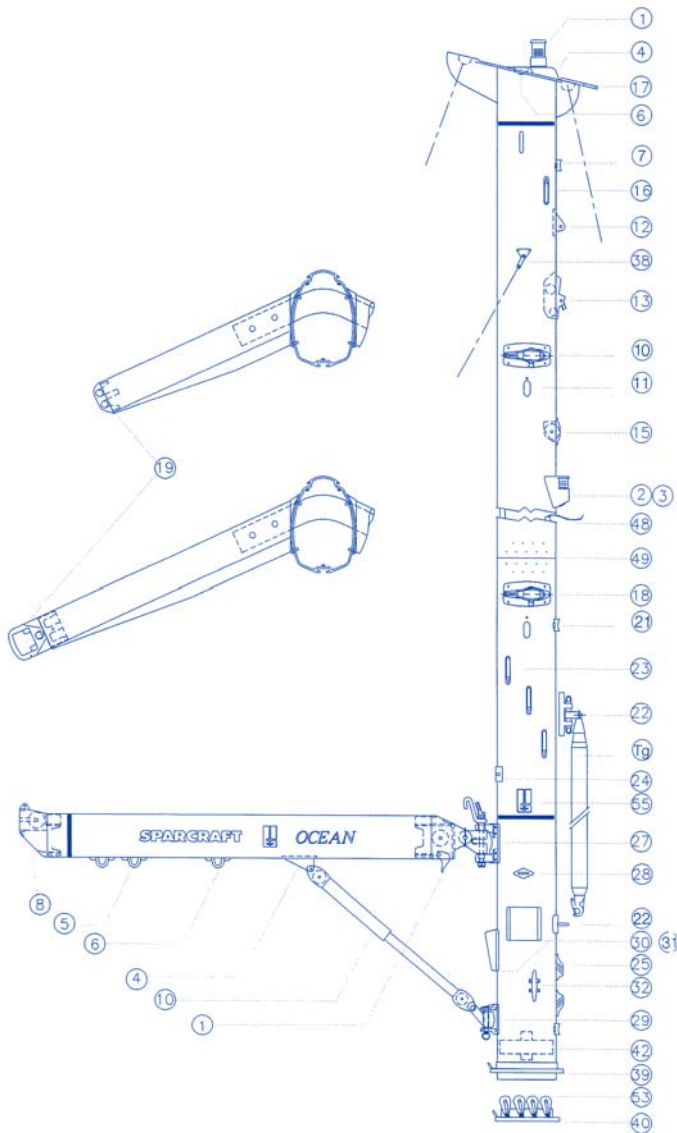
# SPARCRAFT



## OCEAN line

OCEAN is a full range of standard and furling masts to suit all production cruising yachts from coastal cruisers to blue water

offshore passage makers



### MAST

- 1 - Mast head light
- 2 - Steaming light
- 3 - Deck light
- 4 - Mast head
- 6 - Upper shrouds attachment
- 9 - Shrouds attachment
- 12 - Inner forestay attachment
- 13 - Forestay equipment
- 15 - Sheave box
- 16 - Internal spi (entry)
- 17 - External spi attachment
- 18-10 - Spreaders set
- 19 - Spreaders tips
- 22 - Spi equipment
- 23 - Halyard exits
- 24 - Sail gate
- 25 - Clam-cleat
- 27 - Gooseneck attachment
- 28 - Pad eyes
- 29 - Articulated kicker
- 30-31 - Winch pads
- 32 - Cleats
- 22 - Spi eye
- 7 - Fairlead
- 38 - External tangs
- 39 - Deck collar
- 40 - Mast step
- 42 - Internal water-proofing
- 48 - Electrical conduits and wires
- 49 - Internal splices
- 53 - Blocks
- 55 - Stickers

### BOOM

- 1 - Inboard end
- 3 - Complete gooseneck
- 4 - Kicker attachment
- 5 - Main sheet attachment
- 6 - Reefs attachment
- 8 - Outboard end
- 10 - Rod kicker

### Tg POLE POLE

Dimensions (mm)  
 IX' (Cm4)  
 IY' (Cm4)  
 VWeight (Kg/M)

Dimensions (mm)	IX' (Cm4)	IY' (Cm4)	VWeight (Kg/M)
F35 68 x98	35	70	1,7
F50 74 x108	50	100	2,1
F67 82 x118	67	128	2,2
F101 96 x132	101	208	2,5
S137 98 x145	137	306	3,1
S180 104 x159	174	405	3,4
S260 115 x170	257	585	4,2
S330 120 x180	325	742	4,8
NG51 125 x190	405	830	5,3
NG60 137 x205	530	1100	5,9
NG70 145 x220	665	1430	7,0
NG80 155 x230	830	1780	7,7
NG86 172 x248	1050	2150	8,8
NG105 182 x283	1552	3232	10,1

# Masts



- Primary foundry alloy
- Anodized protection
- A full range of standard and optional parts

www.sparcraft.com



Ocean

# Ocean line

www.sparcraft.com

# SPARCRAFT

## Ocean sections

■ Ocean series sections are suitable for small and medium boats, from the original equipment to the current ones.



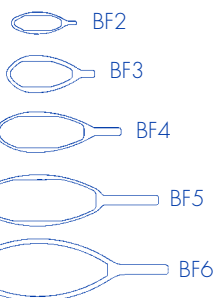
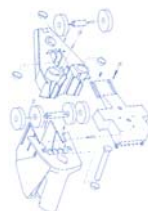
## Mastheads

■ Different models are available, according to your sailing needs : cast, extruded, tapered or non-tapered. There are also sheaves options,...



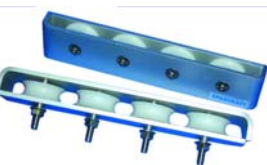
## Spreaders

■ Our standard spreaders are clear anodized and tapered. Sweep angles vary from 0 to 30 degrees.



## Equipment

■ More than 12,000 Sparcraft parts are available to meet your needs : cleats, winch pads, spinnaker gear, tips or thru-bars of spreaders...



## Designed for Life

■ The Ocean series is designed with basic fittings for, low cost, strength, as well as making the components suitable for models of : Isomat, Francespar, ...



## Manufacturing

■ All the parts of the Ocean series are mass produced which makes us competitive. They are made of high resistance alloy : a guaranty of reliability.

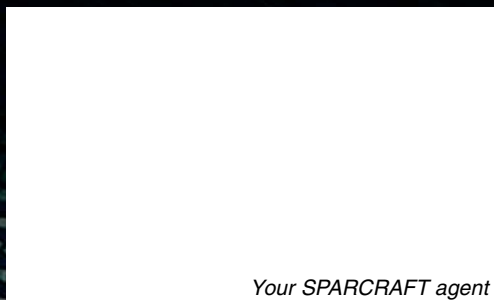
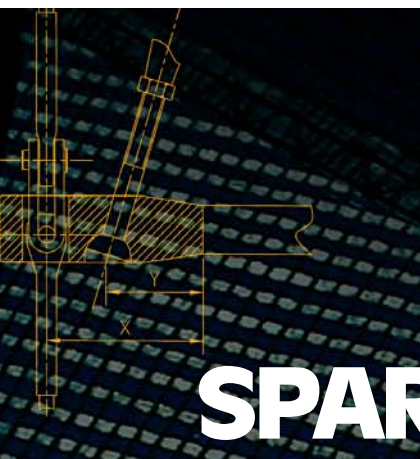


## Warranty

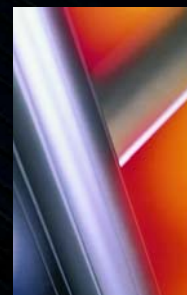
■ All our products have a one year warranty.

## Ocean References

■ Mass series are equipped with Ocean riggings : Comet, Dufour, Feeling, First, Gibsea, Hanse, Oceanis, Sun odyssey, Sun Bean, Spirit, Winner, Multihulls,...



Your SPARCRAFT agent



# SPARCRAFT Performance Engineering